

2 Bedroom

Plot Type 3C

Wells House
Plot 93, 97, 101

Dimensions

Kitchen/Living/Dining
6.30m x 4.20m 20'8" x 13'9"

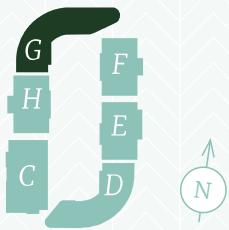
Principal Bedroom
3.90m x 2.80m 12'9" x 9'2"

Bedroom 2
3.30m x 3.25m 10'9" x 10'7"

Balcony
3.45m x 1.10m 11'3" x 3'7"

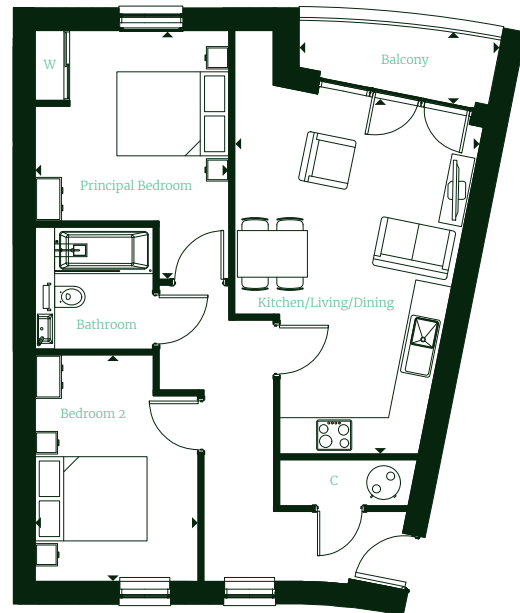
Total Area
62.5 sq m 672 sq ft

Block plan



Floor locator

8	
7	
6	
5	
4	
3	101
2	97
1	93
GF	



Key

- C** Cupboard
- W** Wardrobe

Maximum dimensions are shown.
They are intended as a guide only and are subject to change.
Not all plans are to scale.
Please speak to our sales executive for further information.