

3 Bedroom

Plot Type 5A

Wells House
Plot 90, 94, 98

Dimensions

Kitchen/Living/Dining
7.10m x 4.30m 23'3" x 14'1"

Principal Bedroom
4.80m x 2.65m 15'8" x 8'8"

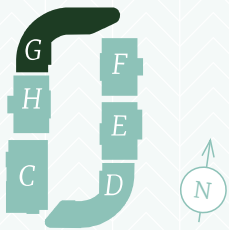
Bedroom 2
5.20m x 2.60m 17'0" x 8'6"

Bedroom 3
3.50m x 3.30m 11'5" x 10'9"

Balcony
5.80m x 3.15m 19'0" x 10'4"

Total Area
88.1 sq m 948 sq ft

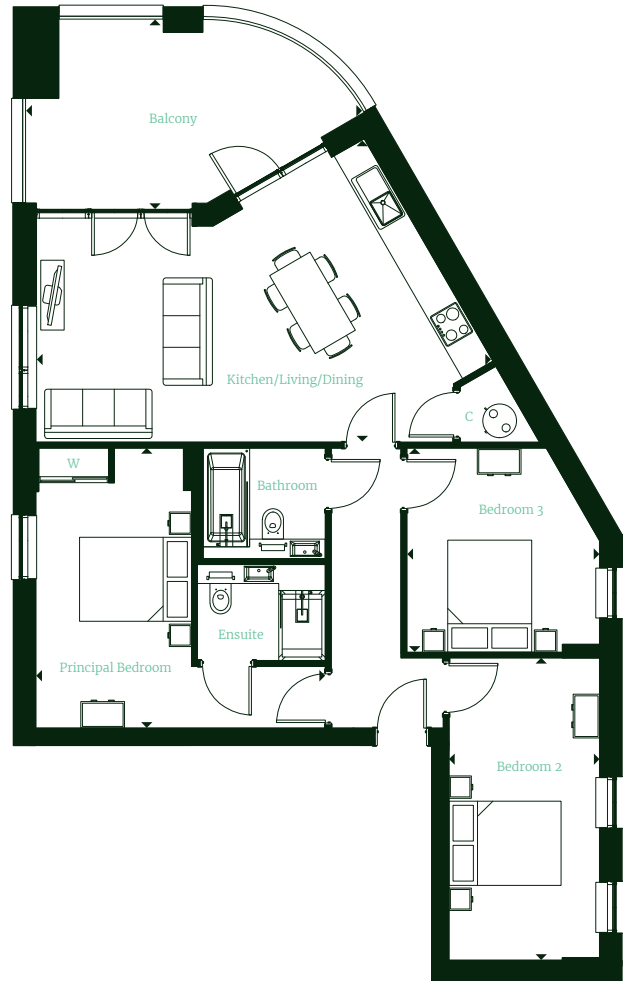
Block plan



Floor locator

8	
7	
6	
5	
4	
3	98
2	94
1	90
GF	

STERLING GARDENS



Key

C	Cupboard
W	Wardrobe

Maximum dimensions are shown.
They are intended as a guide only and are subject to change.
Not all plans are to scale.
Please speak to our sales executive for further information.